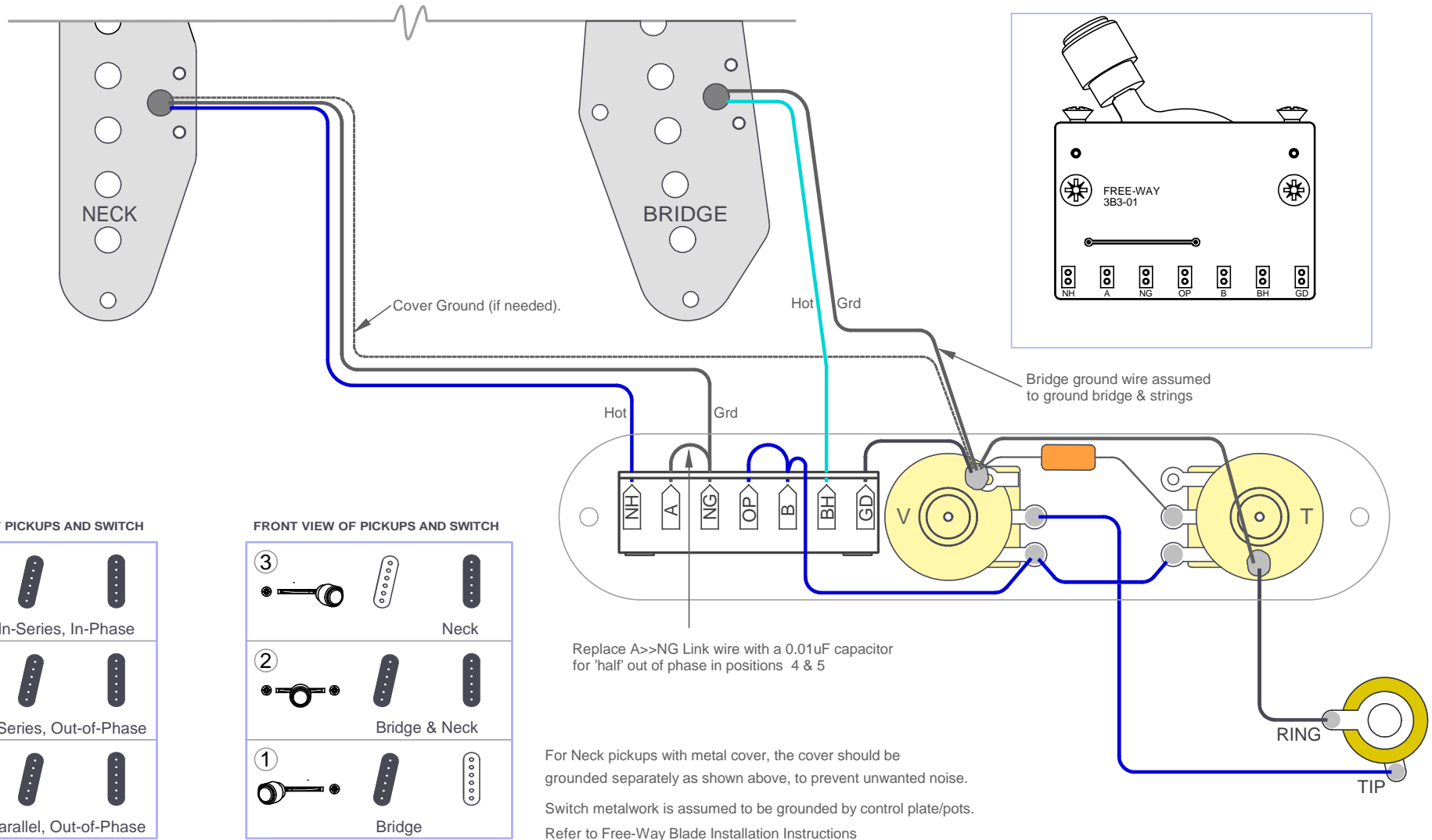


FREE-WAY SWITCH

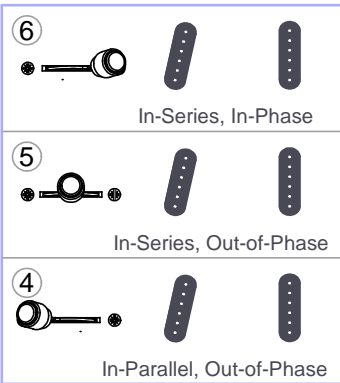
www.freewayswitch.com

MANUFACTURED IN ENGLAND BY NSF CONTROLS LTD

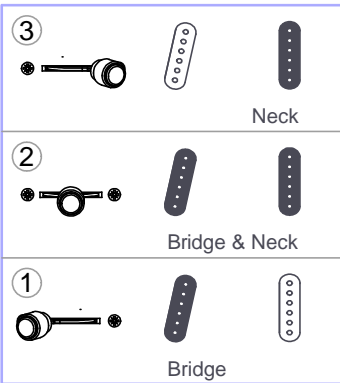
REVERSE VIEW OF PICKUPS, SWITCH AND POTENTIOMETERS.



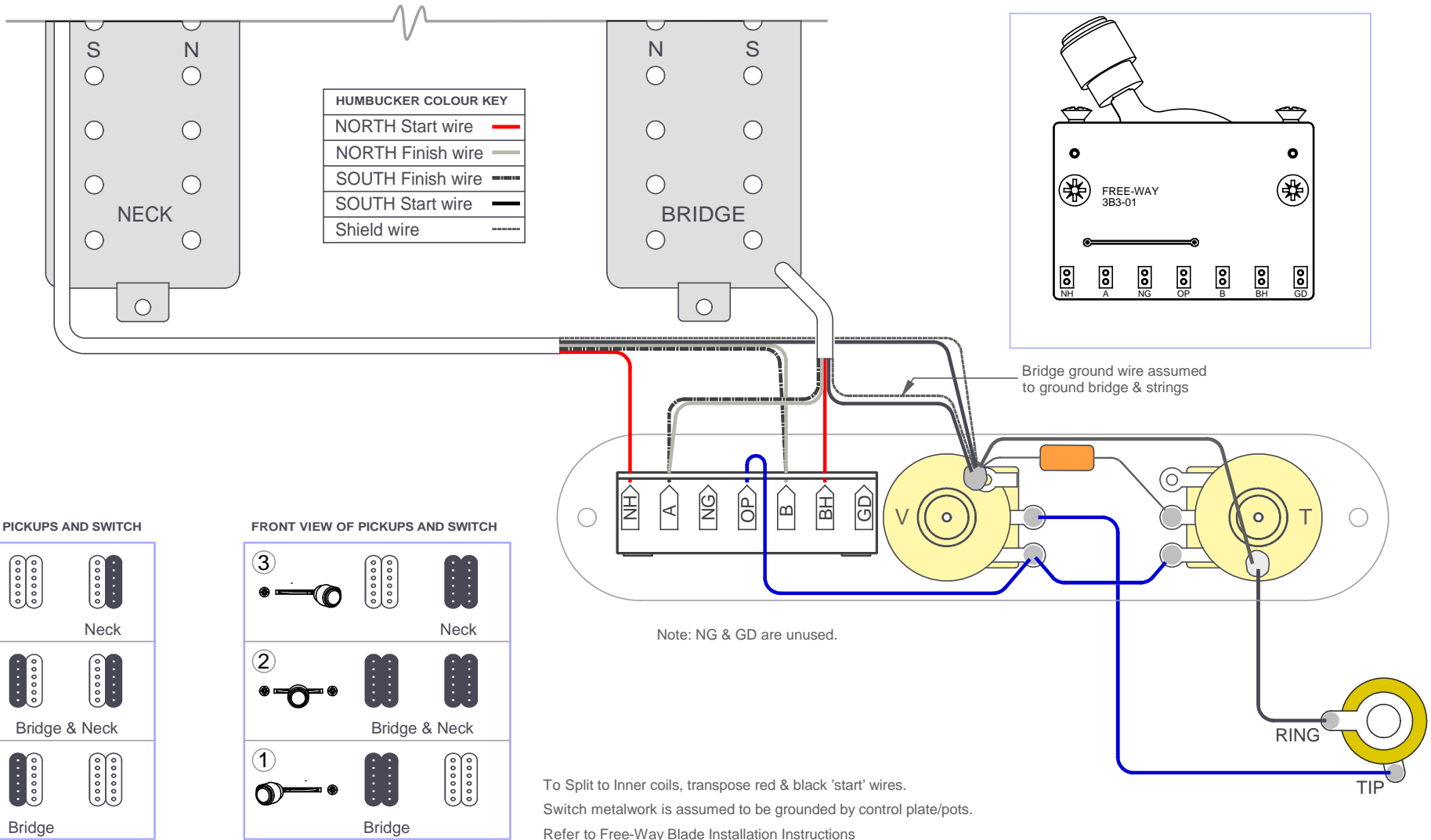
FRONT VIEW OF PICKUPS AND SWITCH



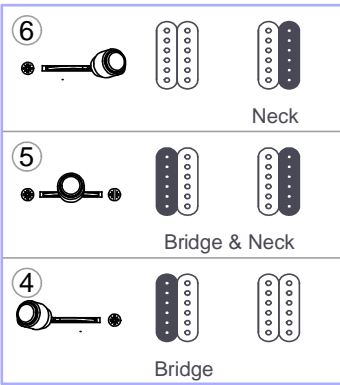
FRONT VIEW OF PICKUPS AND SWITCH



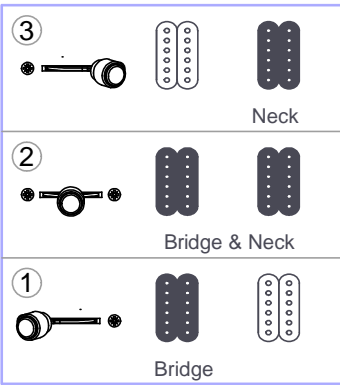
REVERSE VIEW OF PICKUPS, SWITCH AND POTENTIOMETERS.



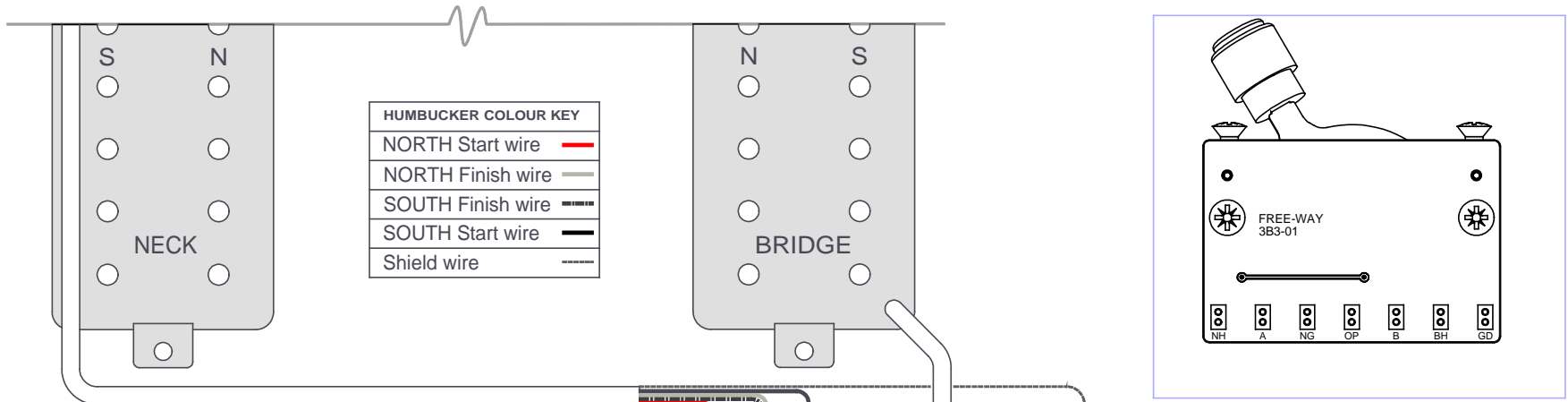
FRONT VIEW OF PICKUPS AND SWITCH



FRONT VIEW OF PICKUPS AND SWITCH

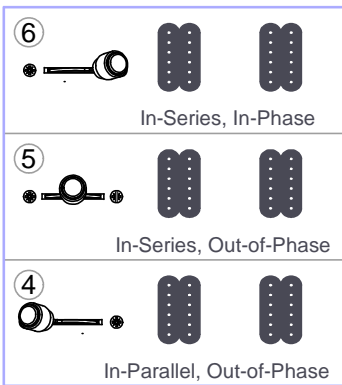


REVERSE VIEW OF PICKUPS, SWITCH AND POTENTIOMETERS.

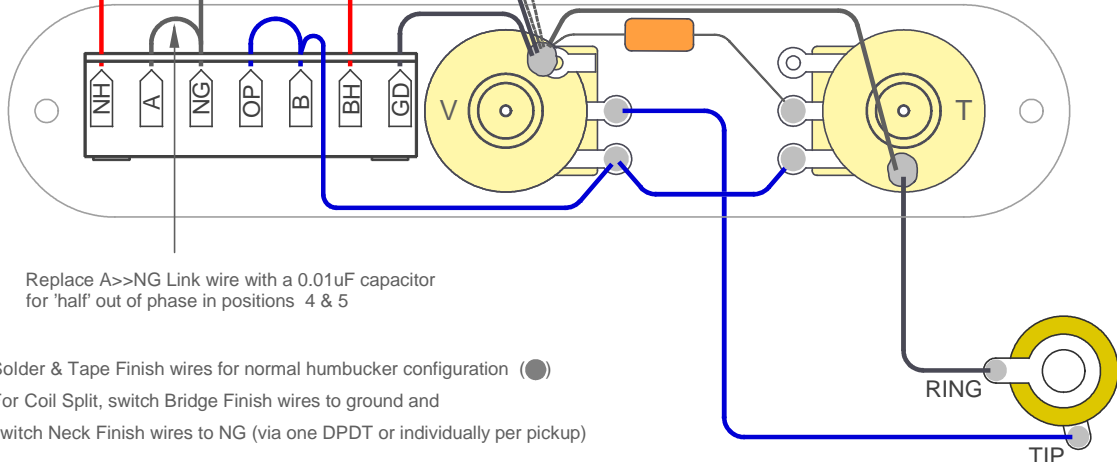
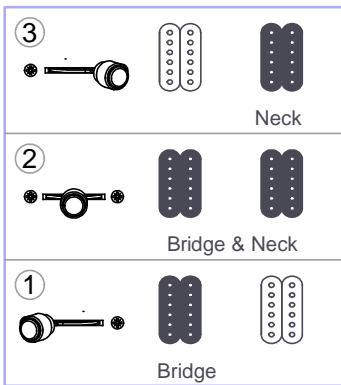


Bridge shield wire assumed to ground bridge & strings
 Ground bridge & strings via separate wire if necessary

FRONT VIEW OF PICKUPS AND SWITCH



FRONT VIEW OF PICKUPS AND SWITCH



Replace A->NG Link wire with a 0.01uF capacitor for 'half' out of phase in positions 4 & 5

Solder & Tape Finish wires for normal humbucker configuration (●)

For Coil Split, switch Bridge Finish wires to ground and switch Neck Finish wires to NG (via one DPDT or individually per pickup)

Switch metalwork is assumed to be grounded by control plate/pots.

Refer to Free-Way Blade Installation Instructions